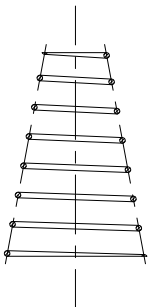
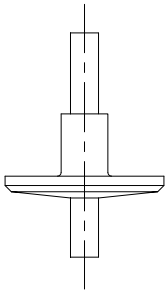
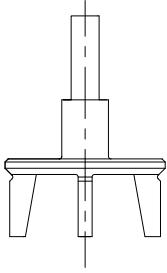


RÜCKSCHLAGVENTIL NON RETURN VALVE



Ersatzteile für DIN und SMS Spareparts for DIN and SMS

4-fach geführte metallische Tellerdichtung 4-way controlled metallic disk seal

DN			Typ Type
25	25	1"	25SD621A
40	38	1½"	38-40SD621A
50			50D621A
65			65D621A
80			80D621A

Für Typen Rückschlagventile: XXD61A / XXD62A / XXS62A
For types of non return valves: XXD61A / XXD62A / XXS62A

1-fach geführte metallische Tellerdichtung 1-way controlled metallic disk seal

DN			Typ Type
	51	2"	51S621B
	63	2½"	63S621B
	76	3"	76S621B
	102	4"	102S621B

Für Typen Rückschlagventile: XXS62B
For types of non return valves: XXS62B

Feder, zylindrisch Spring, cylindric

DN			Typ Type
25	25	1"	25SD603B
40	38	1½"	38-40SD603B
50	51	2"	50-51SD603B
65	63	2½"	63-65SD603B
80	76	3"	76-80SD603B
	102	4"	102S603B

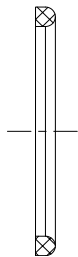
Für Typen Rückschlagventile: XXD61A / XXD62A / XXS62A / XX62B
For types of non return valves: XXD61A / XXD62A / XXS62A / XX62B

Feder, konisch Spring, conical

DN			Typ Type
	51	2"	51S622C
	63	2½"	63S622C
	76	3"	76S622C

Für Typen Rückschlagventile: XXS62C
For types of non return valves: XXS62C

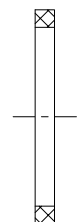
RÜCKSCHLAGVENTIL NON RETURN VALVE



Dichtring, DIN 11851-G, oben und unten Upper and bottom seal ring DIN 11851-G

DN			Typ Type	
			EPDM	FPM (Viton®)
25			25D01003-E	25D01003-V
40			40D01003-E	40D01003-V
50			50D01003-E	50D01003-V
65			65D01003-E	65D01003-V
80			80D01003-E	80D01003-V

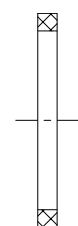
Für Typen Rückschlagventile: XXD61A / XXD62A
For types of non return valves: XXD61A / XXD62A



Dichtring NBR bzw. EPDM, oben Upper seal ring NBR resp. EPDM

DN			Typ Type
25	25	1"	25SD623-N
40	38	1½"	38-40SD623-N
50	51	2"	50-51SD623-N
65	63	2½"	63-65SD623-N
	76	3"	76S623-N
	102	4"	102S31004-E

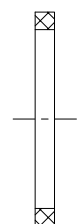
Für Typen Rückschlagventile: XXD61A / XXD62A / XXS62A / XXS62B / XXS63C
For types of non return valves: XXD61A / XXD62A / XXS62A / XXS62B / XXS63C



Dichtring, SMS 1145, unten Bottom seal ring, SMS 1145

DN			Typ Type	
			EPDM	FPM (Viton®)
25	1"	25S31004-E	25S31004-V	
38	1½"	38S31004-E	38S31004-V	
51	2"	51S31004-E	51S31004-V	
76	3"	76S31004-E	76S31004-V	
102	4"	102S31004-E	102S31004-V	

Für Typen Rückschlagventile: XXS62A / XXS62B / XXS63C
For types of non return valves: XXS62A / XXS62B / XXS63C

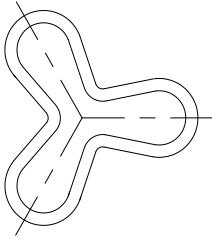


Dichtring NBR, unten Bottom seal ring NBR

DN			Typ Type
63	2½"		63S623-N

Für Typen Rückschlagventile: 63S62B / 63S62C
For types of non return valves: 63S62B / 63S62C

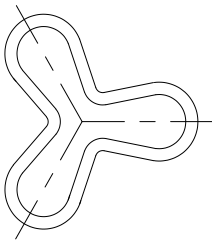
RÜCKSCHLAGVENTIL NON RETURN VALVE



Führungsring oben Upper guiding ring

DN			Typ Type
25	25	1"	25SD601Y
40	38	1½"	38-40SD601Y
50	51	2"	50-51SD601Y
65	63	2½"	63-65SD601Y
80	76	3"	76-80SD601Y
	102	4"	102S601Y

Für Typen Rückschlagventile: XXD61A / XXD62A / XXS62A / XXS62B
For types of non return valves: XXD61A / XXD62A / XXS62A / XXS62B

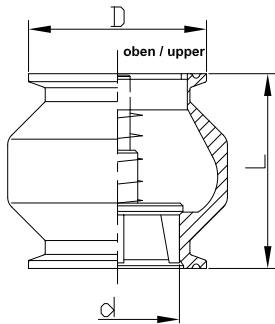


Führungsring unten Bottom guiding ring

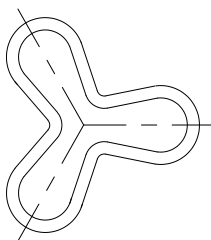
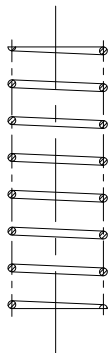
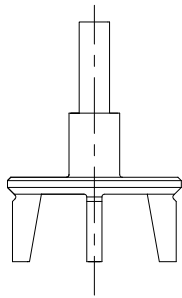
DN			Typ Type
	51	2"	51S601A
	63	2½"	63S601A
	76	3"	76S601A
	102	4"	102S601A

Für Typen Rückschlagventile: XXS62B
For types of non return valves: XXS62B

RÜCKSCHLAGVENTIL NON RETURN VALVE



4-fach geführte metallische Tellerdichtung
4-way controlled metallic disk seal



TC-CLAMP

Rückschlagventil, 2x TC-Clamp Non return valve, 2x TC-Clamp

DN	Typ Type	Ød	ØD	L	p [bar]
1"	25C63A	22,2	50,5	60	0,18
1½"	38C63A	34,9	50,5	62	0,12
2"	51C63A	47,5	64	70	0,08
2½"	63C63A	60,2	77,5	80	0,05
3"	76C63A	72,9	91	90	0,05
4"	102C63A	97,6	119	138	0,05

Ersatzteile für TC-Clamp Spareparts for TC-Clamp

4-fach geführte metallische Tellerdichtung 4-way controlled metallic disk seal

DN	Typ Type
1"	25SD621A
1½"	38C632A
2"	51C632A
2½"	63C632A
3"	76C632A
4"	102C632A

Feder, zylindrisch Spring, cylindric

DN	Typ Type
1"	25SD603B
1½"	38-40SD603B
2"	50-51SD603B
2½"	63-65SD603B
3"	76-80SD603B
4"	102S603B

Führungsring oben Upper guiding ring

DN	Typ Type
1"	25SD601Y
1½"	38C633A
2"	51C633A
2½"	63C633A
3"	76C633A
4"	102C633A