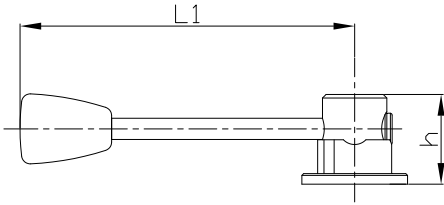


**ERSATZTEILE  
UND ZUBEHÖR  
SPARE PARTS  
AND ACCESSORIES**

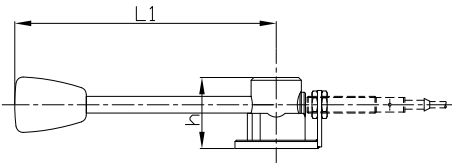
**Für Molchweichen**

**For pigging valves**



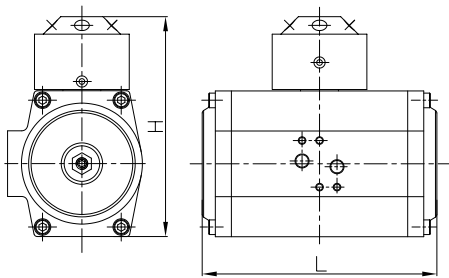
**Standard Handhebel, 3 x 120°**  
Standard handle, 3 x 120°

DN			L1	h	Typ Type
40	38	1½"	160	51	<b>38-40SD506-120</b>
50	51	2"	190	51	<b>50-63SD506-120</b>
	63	2½"	190	51	<b>50-63SD506-120</b>
65	76	3"	190	51	<b>65-80SD506-120</b>
80			190	51	<b>65-80SD506-120</b>
100	102	4"	270	51	<b>100-102SD506-120</b>



**Standard Handhebel mit Rückmeldehalter M12, 0° - 120°**  
Standard handle with feedback bracket M12, 0° - 120°

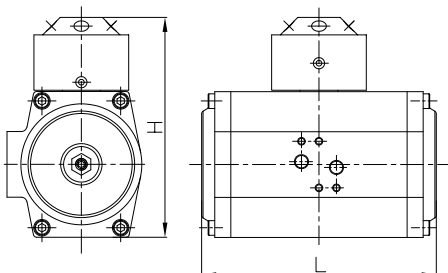
DN			L1	h	Typ Type
40	38	1½"	160	51	<b>38-40SD506-120R</b>
50	51	2"	190	51	<b>50-63SD506-120R</b>
	63	2½"	190	51	<b>50-63SD506-120R</b>
65	76	3"	190	51	<b>65-80SD506-120R</b>
80			190	51	<b>65-80SD506-120R</b>
100	102	4"	270	51	<b>100-102SD506-120R</b>



**Pneumatiktrieb mit Aluminiumgehäuse Serie B, luftöffnend / luftschießend, 0° - 120°**  
Pneumatic actuator with aluminium housing series B, air to open / air to close, 0° - 120°

DN			L	H	Typ Type
40	38	1½"	182	151	<b>38-63KB50V</b>
50	51	2"	182	151	<b>38-63KB50V</b>
	63	2½"	182	151	<b>38-63KB50V</b>
65-80	76	3"	236	168	<b>65-80KB50V</b>
100	102	4"	236	168	<b>100-102KB50V</b>

Gehäuse mit PTFE Beschichtung auf Anfrage / PTFE coated housing upon request



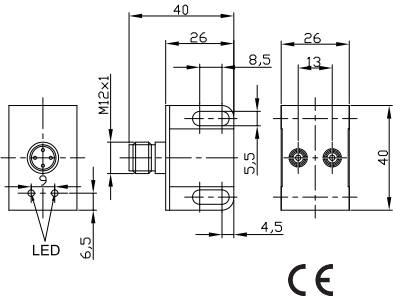
**Dreipositions-Pneumatiktrieb mit Aluminiumgehäuse Serie B, luftöffnend / luftschießend, 0° - 120° - 240°**

**3-position pneumatic actuator with aluminium housing series B, air to open / air to close, 0° - 120° - 240°**

DN			L	H	Typ Type
40	38	1½"	410	151	<b>38-63KB52V</b>
50	51	2"	410	151	<b>38-63KB52V</b>
	63	2½"	410	151	<b>38-63KB52V</b>
65-80	76	3"	518	168	<b>65-80KB52V</b>
100	102	4"	518	168	<b>100-102KB52V</b>

Gehäuse mit PTFE Beschichtung auf Anfrage / PTFE coated housing upon request

**ERSATZTEILE  
UND ZUBEHÖR  
SPARE PARTS  
AND ACCESSORIES**

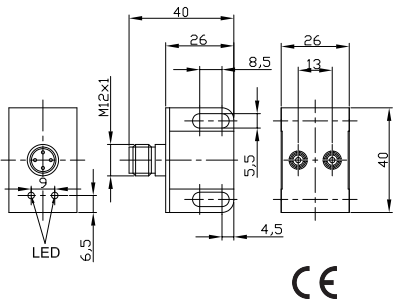


**Für Molchweichen**

For pigging valves

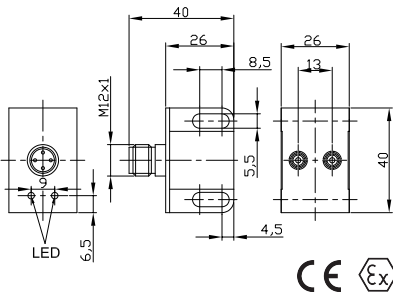
**Induktiver Näherungsschalter (Doppelsensor), 24V DC für Pneumatiktrieb Serie B  
Inductive proximity switch (double sensor), 24V DC for pneumatic actuator series B**

DN			Typ Type
40	38	1½"	<b>25-102M55</b>
50	51	2"	<b>25-102M55</b>
65	63	2½"	<b>25-102M55</b>
80	76	3"	<b>25-102M55</b>
100	102	4"	<b>25-102M55</b>



**Induktiver Näherungsschalter (Doppelsensor), 20-250V AC für Pneumatiktrieb Serie B  
Inductive proximity switch (double sensor), 20-250V AC for pneumatic actuator series B**

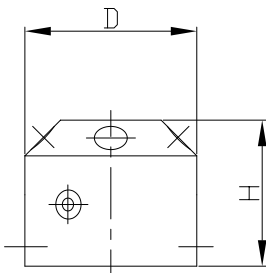
DN			Typ Type
40	38	1½"	<b>25-102M55A</b>
50	51	2"	<b>25-102M55A</b>
65	63	2½"	<b>25-102M55A</b>
80	76	3"	<b>25-102M55A</b>
100	102	4"	<b>25-102M55A</b>



**Induktiver Näherungsschalter (Doppelsensor), 8,2V DC für Pneumatiktrieb Serie B, Ex  
Inductive proximity switch (double sensor), 8,2V DC for pneumatic actuator series B, Ex**

DN			Typ Type
40	38	1½"	<b>25-102M55AT</b>
50	51	2"	<b>25-102M55AT</b>
65	63	2½"	<b>25-102M55AT</b>
80	76	3"	<b>25-102M55AT</b>
100	102	4"	<b>25-102M55AT</b>

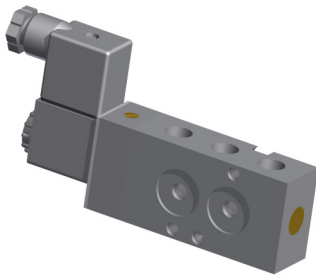
**Schaltnocken für Pneumatiktrieb Serie B, 0° - 120° (240°)  
Target puck for pneumatic actuator series B, 0° - 120° (240°)**



DN			ØD	H	Typ Type
40	38	1½"	65	50	<b>38-102SN53</b>
50	51	2"	65	50	<b>38-102SN53</b>
	63	2½"	65	50	<b>38-102SN53</b>
65	76	3"	65	50	<b>38-102SN53</b>
80			65	50	<b>38-102SN53</b>
100	102	4"	65	50	<b>38-102SN53</b>

5

**ERSATZTEILE  
UND ZUBEHÖR  
SPARE PARTS  
AND ACCESSORIES**



Bestehend aus:  
2 x 5/2 Magnetventil  
1 x Adapterplatte  
inkl. komplette Verschlauchung

Consists of:  
2 x 5/2 solenoid valve  
1 x mounting plate  
incl. complete tubing

**Für Molchweichen**

**For pigging valves**

**5/2 Magnetventil mit Gerätesteckdose für Pneumatiktrieb  
mit Aluminiumgehäuse Serie B**

**5/2 Solenoid valve with cable plug for pneumatic actuator  
with aluminium housing series B**

DN			Typ Type		
40	38	1½"	25-102MVA24D	24V DC	G 1/4
			25-102MVA115A	115V AC	
			25-102MVA230A	230V AC	
50	51	2"	25-102MVA24D	24V DC	G 1/4
			25-102MVA115A	115V AC	
			25-102MVA230A	230V AC	
	63	2½"	25-102MVA24D	24V DC	G 1/4
			25-102MVA115A	115V AC	
			25-102MVA230A	230V AC	
65-80	76	3"	25-102MVA24D	24V DC	G 1/4
			25-102MVA115A	115V AC	
			25-102MVA230A	230V AC	
100	102	4"	25-102MVA24D	24V DC	G 1/4
			25-102MVA115A	115V AC	
			25-102MVA230A	230V AC	

**Steuerventilblock für Dreipositions-Pneumatiktrieb  
mit Aluminiumgehäuse Serie B**

**Steering unit for 3-position operating pneumatic actuator  
with aluminium housing series B**

DN			Typ Type		
40	38	1½"	25-102STV24D	24V DC	G 1/4
			25-102STV115A	115V AC	
			25-102STV230A	230V AC	
50	51	2"	25-102STV24D	24V DC	G 1/4
			25-102STV115A	115V AC	
			25-102STV230A	230V AC	
	63	2½"	25-102STV24D	24V DC	G 1/4
			25-102STV115A	115V AC	
			25-102STV230A	230V AC	
65-80	76	3"	25-102STV24D	24V DC	G 1/4
			25-102STV115A	115V AC	
			25-102STV230A	230V AC	
100	102	4"	25-102STV24D	24V DC	G 1/4
			25-102STV115A	115V AC	
			25-102STV230A	230V AC	

## ERSATZTEILE UND ZUBEHÖR SPARE PARTS AND ACCESSORIES

Bestehend aus:

- 2 x Kolben-Führungsring
- 2 x Führungssegment
- 1 x Gleitring "oben"
- 1 x Gleitring "unten"

Consists of:

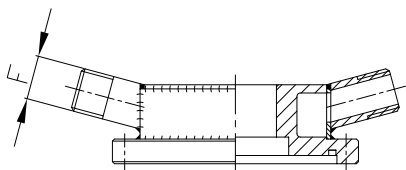
- 2 x piston guiding ring
- 2 x guiding segment
- 1 x slip ring "top"
- 1 x slip ring "bottom"

Bestehend aus:

- 2 x Deckeldichtung
- 2 x O-Ring "Kolben"
- 2 x O-Ring "Antriebsritzel"
- 2 x O-Ring "Einstellschraube"
- 1 x O-Ring "innere Endlageneinstellung"

Consists of:

- 2 x gasket for cap
- 2 x O-ring "piston"
- 2 x O-ring "drive pinion"
- 2 x O-ring 2adjusting screw"
- 1 x O-ring "inside end position adjustment"



## Für Molchweichen

For pigging valves

### Verschleißteilesatz für Pneumatiktrieb Serie B

Set of wearing parts for pneumatic actuator series B

DN			Typ Type
40	38	1½"	<b>25-63W</b>
50	51	2"	<b>25-63W</b>
	63	2½"	<b>25-63W</b>
65-80	76	3"	<b>65-102W</b>
100	102	4"	<b>65-102W</b>

### O-Ring Set für Pneumatiktrieb Serie B

O-ring set for pneumatic actuator series B

DN			Typ Type
40	38	1½"	<b>25-63OR</b>
50	51	2"	<b>25-63OR</b>
	63	2½"	<b>25-63OR</b>
65-80	76	3"	<b>65-102OR</b>
100	102	4"	<b>65-102OR</b>

### Beheizbarer Ventildeckel (Wasser/Dampf)

Heated bearing cap (water/steam)

DN			F	Typ Type
40	38	1½"	R 1/2"	<b>38-40SDV505H</b>
50	51	2"	R 1/2"	<b>50-51SDV505H</b>
	63	2½"	R 1/2"	<b>63SV505H</b>
65	76	3"	R 1/2"	<b>65-76SDV505H</b>
80			R 1/2"	<b>80DV505H</b>
100	102	4"	R 1/2"	<b>100-102SDV505H</b>